

# MONTHLY MEMBERSHIP PROGRESS REPORT

LOCATION KENYA AFRICA

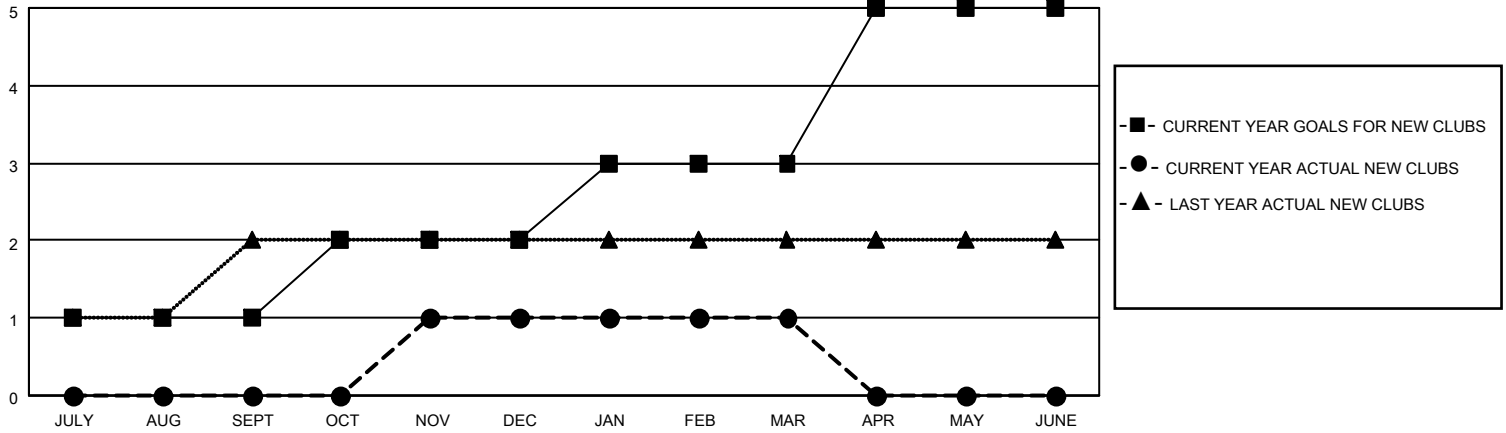
District 411 A

Results as of: 3/31/2022

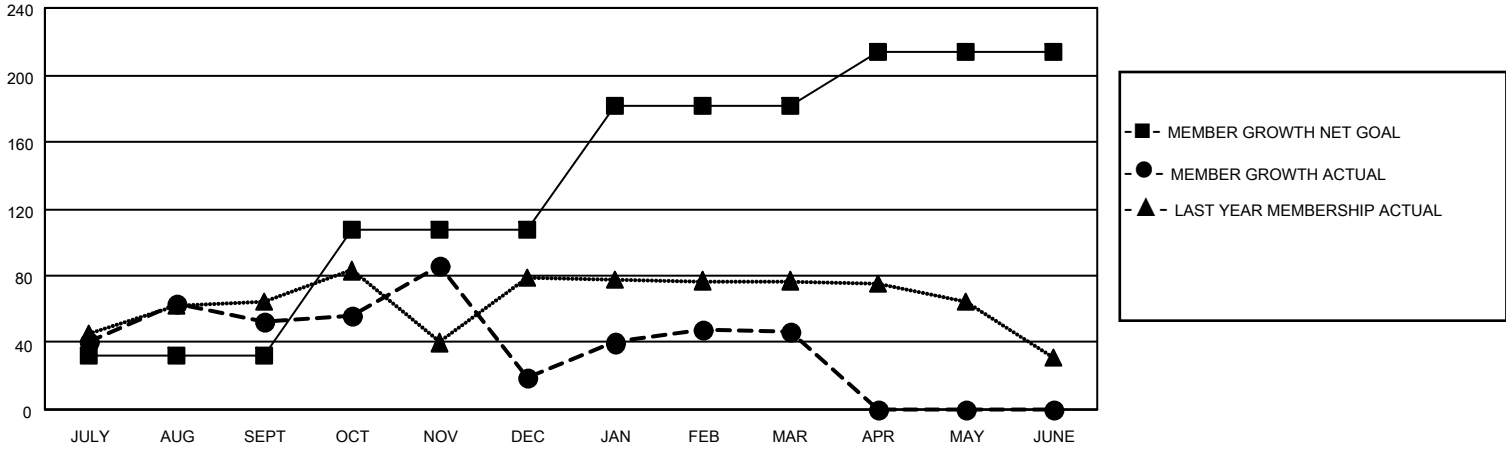
Clubs			
RESULTS FOR 2021-2022			
QUARTER	NEW CLUB GOAL	NEW CLUBS	DROPPED CLUBS
JULY/AUG/SEPT	1	0	0
OCT/NOV/DEC	1	1	2
JAN/FEB/MAR	1	0	0
APR/MAY/JUNE	2	0	0

Members			
RESULTS FOR 2021-2022			
QUARTER	MEMBER GROWTH NET GOAL	MEMBER GROWTH ACTUAL	DROPPED MEMBERS ACTUAL (including transfers)
JULY/AUG/SEPT	32	96	41
OCT/NOV/DEC	75	46	79
JAN/FEB/MAR	75	47	19
APR/MAY/JUNE	32	0	0

**GOALS AND ACTUAL NEW CLUBS CUMULATIVE**



**GOALS AND ACTUAL MEMBERS CUMULATIVE**



DROPPED CLUBS: 2	
<b>DROPPED MEMBERS</b>	
DECEASED	4
CLUB CANCELLED	44
OTHER	91
<b>TOTAL</b>	<b>139</b>

35 CLUBS OF 66 ADDED 1 OR MORE NEW MEMBERS

[CLICK HERE FOR CUMULATIVE MEMBERSHIP DATA](#)

<u>GENDER DISTRIBUTION</u>	
MALE	985 (61.10%)
FEMALE	627 (38.90%)
NON BINARY	0 (0.00%)
PREFER NOT TO ANSWER	0 (0.00%)
<b>TOTAL FAMILY UNIT MEMBERS</b>	<b>357</b>
<b>FAMILY MEMBERS PAYING HALF DUES</b>	<b>196</b>